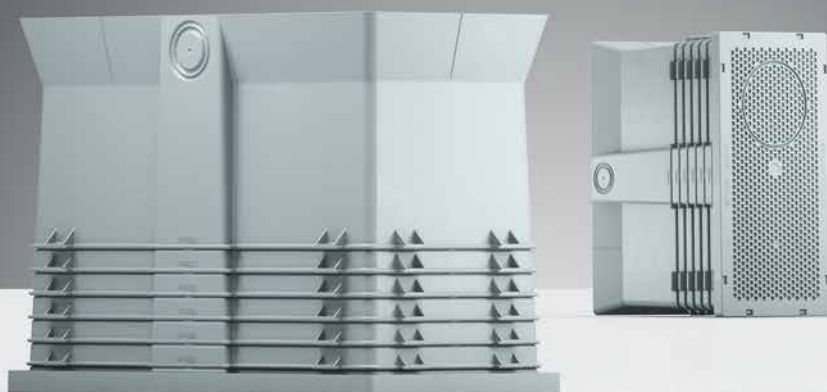


# Installation housing

## ThermoX® Iso +.

For built-in LED luminaires and installation accessories in insulated ceilings.

Heat-bridge-free electrical installation for built-in luminaires.

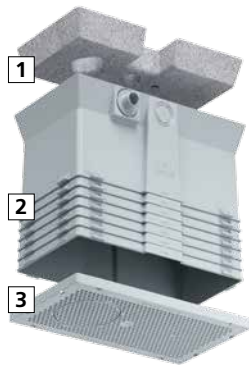




## Installation housing ThermoX® Iso +

Installation housing for the secure and heat-bridge-free installation of rigid and swivelling built-in LED luminaires and accessories in insulated ceilings. The housing protects the surrounding installation material against the high operating temperatures of the LED luminaire and protects the LED luminaire itself against dirt. The integrated insulation element reliably prevents heat bridges.

- For the fitting of LED luminaires and installation accessories in insulated ceilings
- Suitable for use with all standard insulating materials
- Thermally-protected installation space
- Prevention of heat bridges through the integrated insulation element
- For insulation thicknesses from 100 mm up to 160 mm (170 mm up to 350 mm with extension element)
- Adaptation to the insulation thickness in 10 mm steps
- Installation diameter up to 86 mm



1 Insulation element, 2 Installation housing,  
3 Front panel (Art. No. 1159-70)

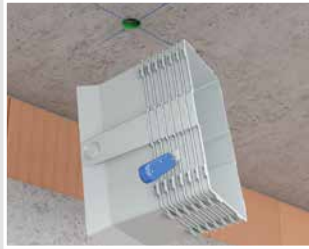


Under the patronage of the Bundesminister des Innern, für Bau und Heimat (= German Federal Minister of the Interior, for Building and Homeland), the BAKA Bundesverband Altbauerneuerung e. V. and the Messe München award the **“BAKA Preis für Produktinnovation”** for future-oriented product ideas and system solutions especially for refurbishing work.

## Installation



Insulation thicknesses from 100 mm to 160 mm are possible (up to 350 mm with extension element)



Use the measuring scale for easy cutting in 10 mm steps and adaptation to the insulation thickness.



Many possibilities for conduit and cable entry. For breaking out, or making with the universal ...



... opening cutter (Art. No. 1085-80). Installation housing for single use or in a group arrangement.



Fixed installation diameter of 68 mm for hammering in ....



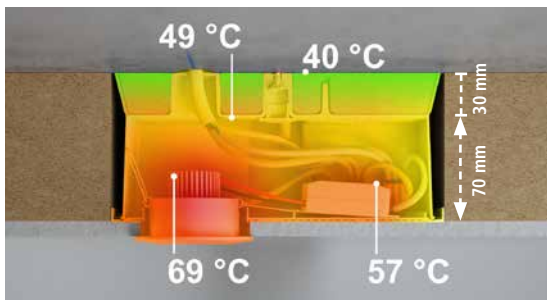
... or individual shape possible for cutting out up to  $\varnothing$  86 mm.



Fitting of the LED installation spotlight with plenty of space for the ballast device.



Adaptation to the installation thickness in 10 mm steps. Insulation depth for the luminaire = insulation thickness - 30 mm.

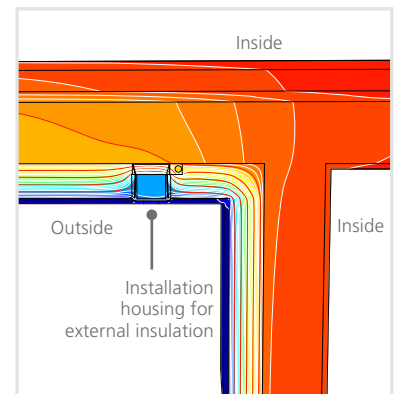


**Temperature profile:** Installation housing for external insulation (ambient temperature of 25°C) with LED illumination of 8 Watt.

## Heat bridge calculation

A heat bridge calculation carried out by the Passivhaus Institut in Darmstadt (Germany) shows that heat bridges are reliably prevented by the installation housing for external insulation.

**The installation housing is also suitable for use in passive houses.**



## Use / insulation materials



The installation housing can be used in all standard insulating materials e.g. wood fibre insulation,



cellular glass, ...



mineral foam or ...



expanded polystyrene (EPS).

### Installation housing ThermoX® Iso +

- for the external insulation of ceilings
- for insulation thicknesses of 100 mm and above
- adaptation to the insulation thickness in 10 mm steps
- for LED luminaires up to 8 Watt
- max. luminaire installation depth 70 mm to 130 mm (insulation thickness -30 mm)
- front panel with installation diameter of 68 mm or universal up to Ø 86 mm
- space for ballast devices 120 mm x 30 mm x 28 mm (installation diameter 68 mm, installation depth 70 mm)



<b>Length x width x height</b>	<b>220 x 110 x 160 mm</b>
Insulation thickness	100 - 160 mm
Installation diameter luminaire / loudspeaker	68 mm - 86 mm
max. LED wattage	8 Watt
max. installation depth of the LED luminaire	70 - 130 mm
Cable or conduit entries up to Ø 25 mm	5
<b>Art. No.</b>	<b>1159-70</b>
Inner packaging/shipping	- / 6

### Extension element

- for installation housings for external insulation
- for insulation thicknesses from 170 - 350 mm
- adaptation to the insulation thickness in 10 mm steps



<b>Length x width x height</b>	<b>220 x 110 x 190 mm</b>
Insulation thickness in combination with 1159-70	170 - 350 mm
<b>Art. No.</b>	<b>1159-71</b>
Inner packaging/shipping	- / 6

### Sealing plug 20-25

- reliable sealing of electrical installation conduits
- ECON technology for easy cable entry
- permanently elastic plastic



Sealing plug	M20	M25
DIN EN conduit Ø	20 mm	25 mm
<b>Art. No.</b>	<b>1040-20</b>	<b>1040-25</b>
Inner packaging/shipping	25 / 100	25 / 100

### Universal opening cutter for plastic materials

- for making exact entries
- for low-voltage cables from Ø 4 – 7.5 mm
- for cables NYM from 5 x 2.5 or 7 x 1.5
- for cables NYY up to 5 x 2.5
- for DIN EN conduits (flexible) up to external Ø 20/25 mm
- with chuck holder 1/4" for battery-powered drill



<b>For exact openings</b>	<b>4 - 22.5 mm</b>
<b>Art. No.</b>	<b>1085-80</b>
Inner packaging/shipping	- / 10

